

SPEC SHEET + MEASUREMENTS



Carhartt® Storm Defender® Shoreline Jacket. CT104670

Product photo



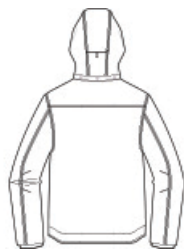
Our best-selling Shoreline Jacket has been updated—but it still includes Storm Defender® waterproof, breathable technology to stop water from getting in and allow sweat to get out.

- 7.3-ounce, 100% nylon oxford shell
- Storm Defender® waterproof, breathable technology
- Wind Fighter® technology tames wind
- 10K/10K waterproof/breathable protection rating
- Fully taped waterproof seams
- Polyester mesh lining in body for breathability
- Taffeta lining in sleeves and hood for easy on/off
- Adjustable, removable roll-away hood
- Full-zip front with inner and outer storm flaps to keep water out
- Two interior pockets with hook and loop closures
- Left chest pocket with secure waterproof zipper and storm flap
- Two lower front pockets with zippered closures and storm flaps
- Adjustable cuffs with hook and loop closures and inner sleeve storm cuffs
- Adjustable drop tail hem
- Carhartt-strong, triple-stitched main seams
- Carhartt label sewn on chest pocket
- Loose fit

Sketches



front



back

CARE INSTRUCTIONS

Close All Zippers. Machine Wash Warm Like Colors. Non-Chlorine Bleach. Tumble Dry Low. Do Not Use Fabric Softeners. Cool Iron. Do Not Dry Clean. Exclusive Trimming.

SPEC SHEET + MEASUREMENTS



Carhartt® Storm Defender® Shoreline Jacket. CT104670

PRODUCT MEASUREMENTS

	S	M	L	XL	2XL	3XL	4XL
Chest	23	25	27	29	31	33	35
Body Length at Back	28 1/2	29 3/4	30	31 1/4	31 1/2	32 3/4	33
Sleeve Length from Center Back	35 7/8	36 1/2	37 1/8	37 3/4	38 3/8	38 7/8	39 3/8

Chest: Measured across the chest one inch below armhole when laid flat.

Body Length at Back: Measured from high point shoulder to finished hem at back.

Sleeve Length from Center Back: Measure from Center Back neck to shoulder point to sleeve hem.

SIZE CHARTS

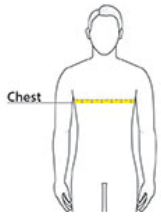
	S	M	L	XL	2XL	3XL	4XL
Chest	34-36	38-40	42-44	46-48	50-52	54-56	58-60

SPEC SHEET + MEASUREMENTS



Carhartt® Storm Defender® Shoreline Jacket. CT104670

HOW TO MEASURE



CHEST

Measure under the arm and around the fullest part of the chest with arms down, keeping tape horizontal.

COLORS



Black
PMS BLACK
C



Moss
PMS 7770C



Navy
PMS 533C



Shadow Grey
PMS 7540C